

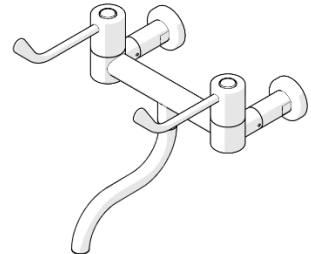
Product Installation Guidelines & Scope of Use

Version 2, 16 April 2025, Page 1 of 4
Document No.: 102.24.21.00

CliniLever® CP-BS Lead Safe™ Hospital Wall Mixing Set Type 57 Downswept Swivel 150 C/D

PRODUCT CODES:

- 102.24.21.00



SPECIFICATIONS

- The CliniLever® product range is primarily used for hand washing applications in medical facilities, hospitals, aged care facilities, schools and in-home care.
- CliniLever® products provide state of the art features to comply with the latest healthcare guidelines.
- The dual levers for on/off, hot and cold temperature have a straightforward operation which simplifies hand washing.
- All CliniLever® products are laminar flow (not aerated).
- Our highly sought after lever handle design is easily operated with elbows or wrists to avoid hand contact.
- The main body is made of solid dezincification resistant (DR) brass rod, with a DR brass gooseneck outlet.
- Quick action SBA's include a ceramic disc component, with red and blue indicator button on 150mm lever action handles.
- Lead Safe™ brass construction.*

IMPORTANT: All CliniLever® Healthcare taps are tested in accordance with AS 3718 and leave our premises in good working order.

*Our Lead Safe™ product range is compliant with the Lead-Free Requirements of the NCC 2022 Vol. Three, Clause A5G4(2) and NSF/ANSI 372.

** Any flow controller incorporated in the outlet to be tightened to prevent removal by hand. As Per AS3718.

WARNINGS: Special attention to be paid to notes, photos, images, or drawings of assembly steps marked with the warning symbol.



TECHNICAL DATA

Inlet		G ½” – Female
Outlet		Laminar Flow
Headwork		Ceramic Disc
Working Pressure Range (kPa)	Min	50
	Max	500
Working Temperature Range (°C)	Min	5
	Max	65
Nominal Flow Rate (LPM)		5.1
Finish		Chrome
NOTE: Galvin Engineering continually strives to improve their products. Specifications may change without notice.		

TOOLS REQUIRED

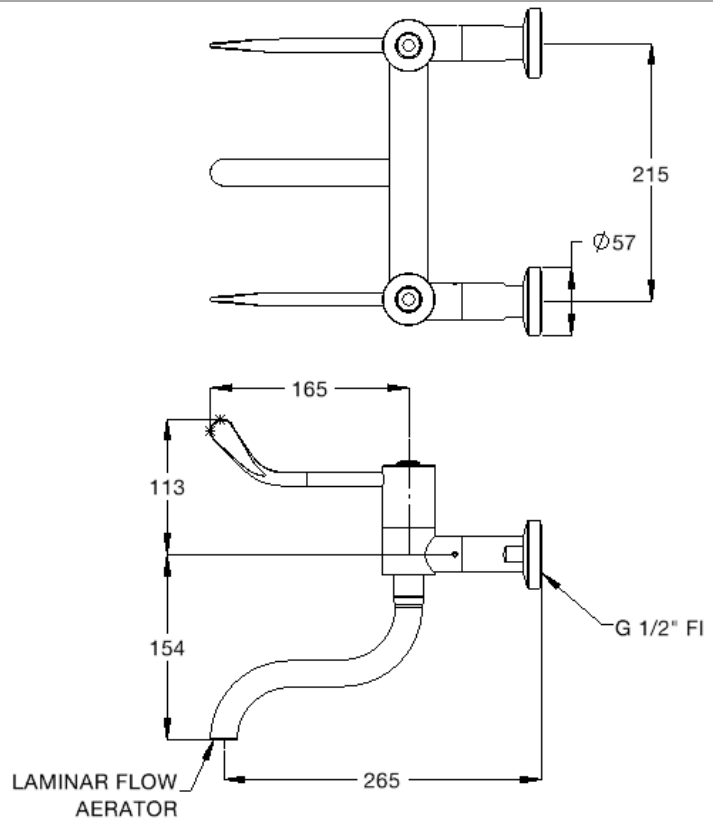
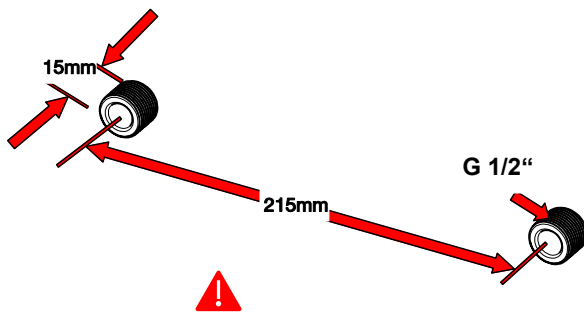
– Power drill	– 27mm Spanner/Adjustable Wrench & Hex Key	– Thread tape
---------------	--	---------------

PRE-INSTALLATION - Mounting Details

Hole Centres

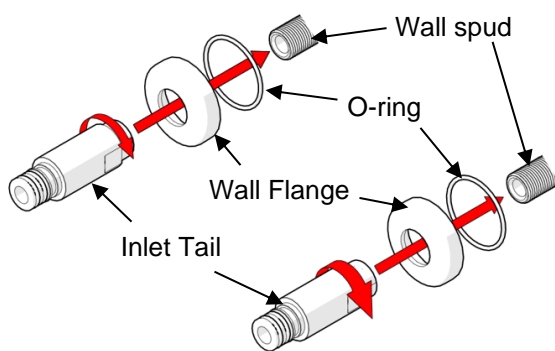
- Hole centres must be at 215mm $\pm 0.5\text{mm}$, this is critical to ensure easy installation
- Wall spuds must be G 1/2" and protrude from the finished wall by no more than 15mm

Note: In some situations, a male thread connection on the tap may be more suited. If so, please contact us on 1300 514 074



INSTALLATION

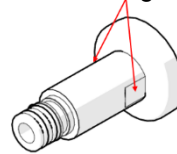
IMPORTANT: Galvin Engineering products must be installed in accordance with these installation instructions and in accordance with AS/NZS 3500, the PCA and your local regulatory requirements. Water and/or electrical supply conditions must also comply to the applicable national and/or state standards. Failing to comply with these provisions shall void the product warranty and may affect the performance of the product.



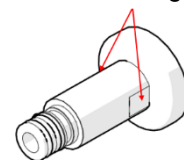
1. Fit wall flange

- Take the inlet tails and wall flanges out of their packaging.
- Make sure the rubber O-rings are securely placed in the groove at the back of the wall flanges, then slide the flanges over the inlet tails.

Wrenching flats

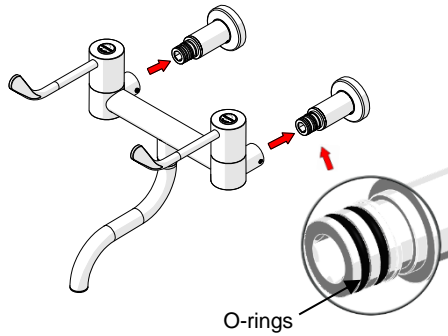


Wrenching flats



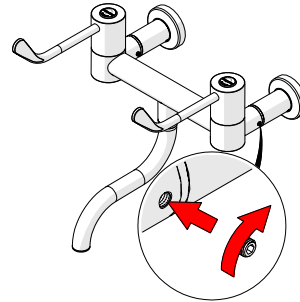
2. Fit inlet tail

- Fit the inlet tail (with the wall flange) to the wall spud and fasten with a 27mm spanner or an adjustable wrench using the wrenching flats. Use thread tape or equivalent to ensure the connection does not leak.



3. Fit assembly body

- Check inlet tail to ensure O-rings are fitted and are in good condition.
- Fit the assembly body onto the inlet tails until it sits flush against them, taking care not to damage the O-rings.



4. Fit grub screws and test

- Ensure the assembly body is pushed firmly against the inlet tail and then secure in place with the supplied grub screws. **ENSURE ALL FOUR (4) GRUB SCREWS ARE FITTED WITH THE SUPPLIED ALLEN KEY.** If Grub Screws are missing, contact us on 1300 514 074.
- Once grub screws are secure, turn on water. Open the lever handles and ensure there is flow from both hot and cold inlets. Inspect the tap and check for any leaks.

TROUBLESHOOTING

PROBLEM	CAUSE	RECTIFICATION
Taps are dripping water	Ceramic discs are worn or damaged	Remove and inspect SBA. Remove debris and/or replace SBA if damaged.
	Tap seat is damaged	Refurbish tap seat using a reseating tool.
Water is leaking from ceramic disc	O-ring on ceramic disc is damaged or worn	Replace o-ring
Water is not flowing from tap	Water supply is turned off	Turn water supply on
	Aerator or flow regulator is blocked by debris	Remove aerator and/or flow regulator from tap and remove debris. Install an in-line strainer.
Ceramic disc is difficult to turn	Build-up of scale on ceramic disc	Remove ceramic disc and clean. Re-fit disc. Complete ceramic disc may need to be replaced.
	Ceramic Disc worn or damaged	
Handle is loose	Screw has come loose	Tighten handle screw

SERVICE AND MAINTENANCE

1. Turn off the water supply and turn on the tap handle to drain water from the bodies.
2. Remove the temperature indicator from the handle.
3. Remove the handle from the tap.
4. Unscrew the ceramic headpart from the body.
5. Check the o-ring on the ceramic headpart for wear and damage. Replace if required.
6. Clean the headpart and the body of any debris.
7. Replace the cartridge and hand-tighten back into the body.
8. Follow the product installation guidelines for the relevant product re-assembly method.

WARRANTY

Galvin Engineering products are covered under our Manufacturer's Warranty. Galvin Engineering products must be installed in accordance with the installation instructions and in accordance with AS 3500 and NCC Volume Three, relevant Australian Standards and local authorities applicable to product being installed. Water and electrical supply conditions must also comply to the applicable national and/or state standards, failing to comply with these provisions may void the product warranty and affect performance of the product.

Please visit www.galvinengineering.com.au to view the full warranty, our Installation Compliance and Maintenance & Cleaning information as well as any other additional information.

Within Australia: **1300 514 074** Outside Australia: P: **+61 (0)8 9338 2344**

F: **+61 (0)8 9338 2340**

sales@galvinengineering.com.au

www.galvinengineering.com.au

ABN: 78 008 719 382

PERTH | SYDNEY | MELBOURNE | BRISBANE | ADELAIDE

